



Seriemã

GLAZIER - 5



Seriemă

GLAZIER - 5


Seriema





BLUE BITE





Seriemã

D.NO- 1098



C A R T I E R



D.NO- 1105



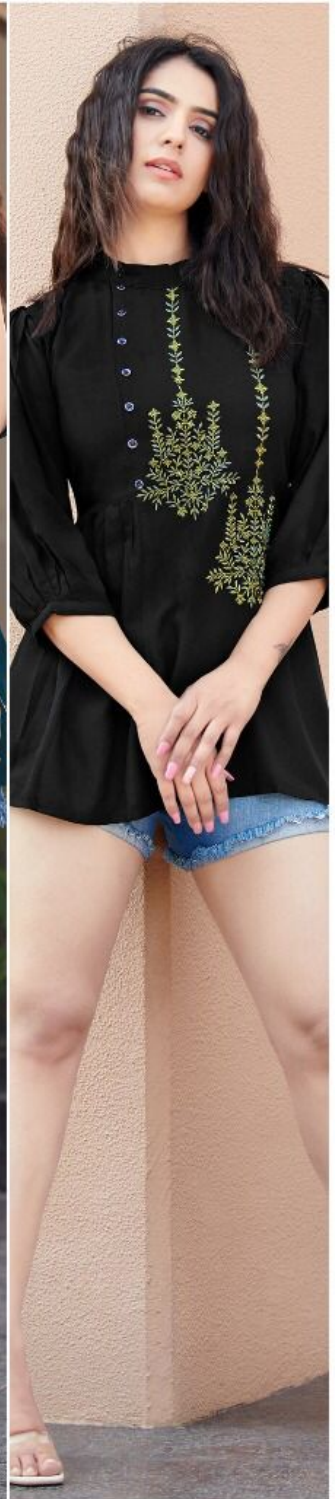
D.NO- 1102



D.NO- 1103



D.NO- 1104



D.NO- 1105



D.NO- 1098



D.NO- 1099



D.NO- 1100



D.NO- 1101



D.NO- 1098

D.NO- 1099

D.NO- 1100

D.NO- 1101



D.NO- 1102

D.NO- 1103

D.NO- 1104

D.NO- 1105



D E P A T U R E



B A R B Y R E D

D.NO- 1099

 *Seriema*



 *Seriema*





 *Seriema*

D.NO- 1101

A woman with long, dark, wavy hair is wearing a mustard yellow, long-sleeved, knee-length dress. The dress features a round neckline with three buttons and intricate white floral embroidery on the chest. The sleeves have a gathered, elasticated cuff. She is standing outdoors in front of a tan wall and some dried, reddish-brown plants. The background is softly blurred. In the top right corner, there is a logo for 'Seriemã' featuring a stylized blue bird or wing shape above the brand name in a cursive font.

Seriemã

D.NO- 1100

 *Seriema*





G L A Z I E R



 *Seriema*

BALLYFIN
SUNGLASSES



