



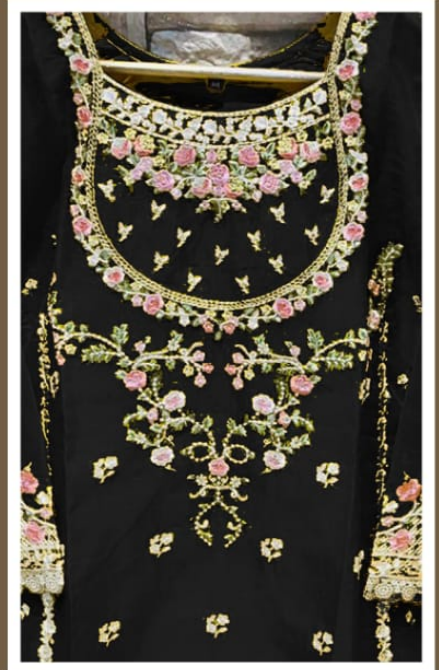
#### FABRIC DETAILS

TOP- HEAVY ORGENZA WITH MULTY  
THREAD EMROIDERY WORK

DUPATTA- HEAVY ORGENZA WITH MULTY  
THREAD EMROIDERY WORK

BOTTOM- 2 WAY LYCRA COTTON

INNER- HEAVY SHANTOON



**D.NO.26-B**



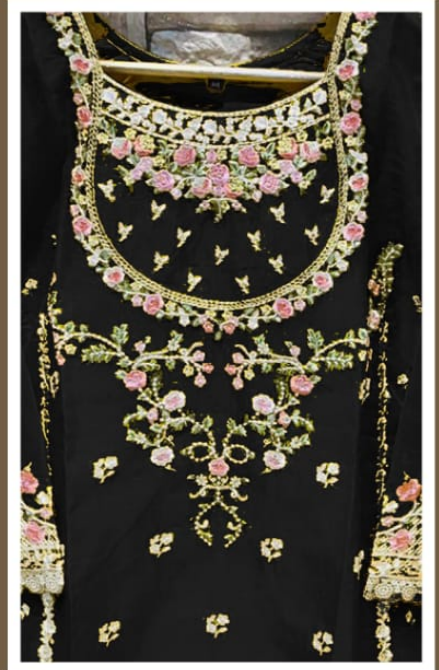
#### FABRIC DETAILS

TOP- HEAVY ORGENZA WITH MULTY  
THREAD EMROIDERY WORK

DUPATTA- HEAVY ORGENZA WITH MULTY  
THREAD EMROIDERY WORK

BOTTOM- 2 WAY LYCRA COTTON

INNER- HEAVY SHANTOON



**D.NO.26-B**





#### FABRIC DETAILS

TOP- HEAVY ORGENZA WITH MULTY  
THREAD EMROIDERY WORK

DUPATTA- HEAVY ORGENZA WITH MULTY  
THREAD EMROIDERY WORK

BOTTOM- 2 WAY LYCRA COTTON

INNER- HEAVY SHANTOON



**D.NO.26-C**





#### FABRIC DETAILS

TOP- HEAVY ORGENZA WITH MULTY  
THREAD EMROIDERY WORK

DUPATTA- HEAVY ORGENZA WITH MULTY  
THREAD EMROIDERY WORK

BOTTOM- 2 WAY LYCRA COTTON

INNER- HEAVY SHANTOON



**D.NO.26-A**