



**Fepic**®

**Rosemeen**®

IMAGE CHIKANKARI  
COLLECTION



**Epic<sup>®</sup>**

**Rosemeen<sup>®</sup>**

IMAGE CHIKANKARI  
COLLECTION

D.NO.46026

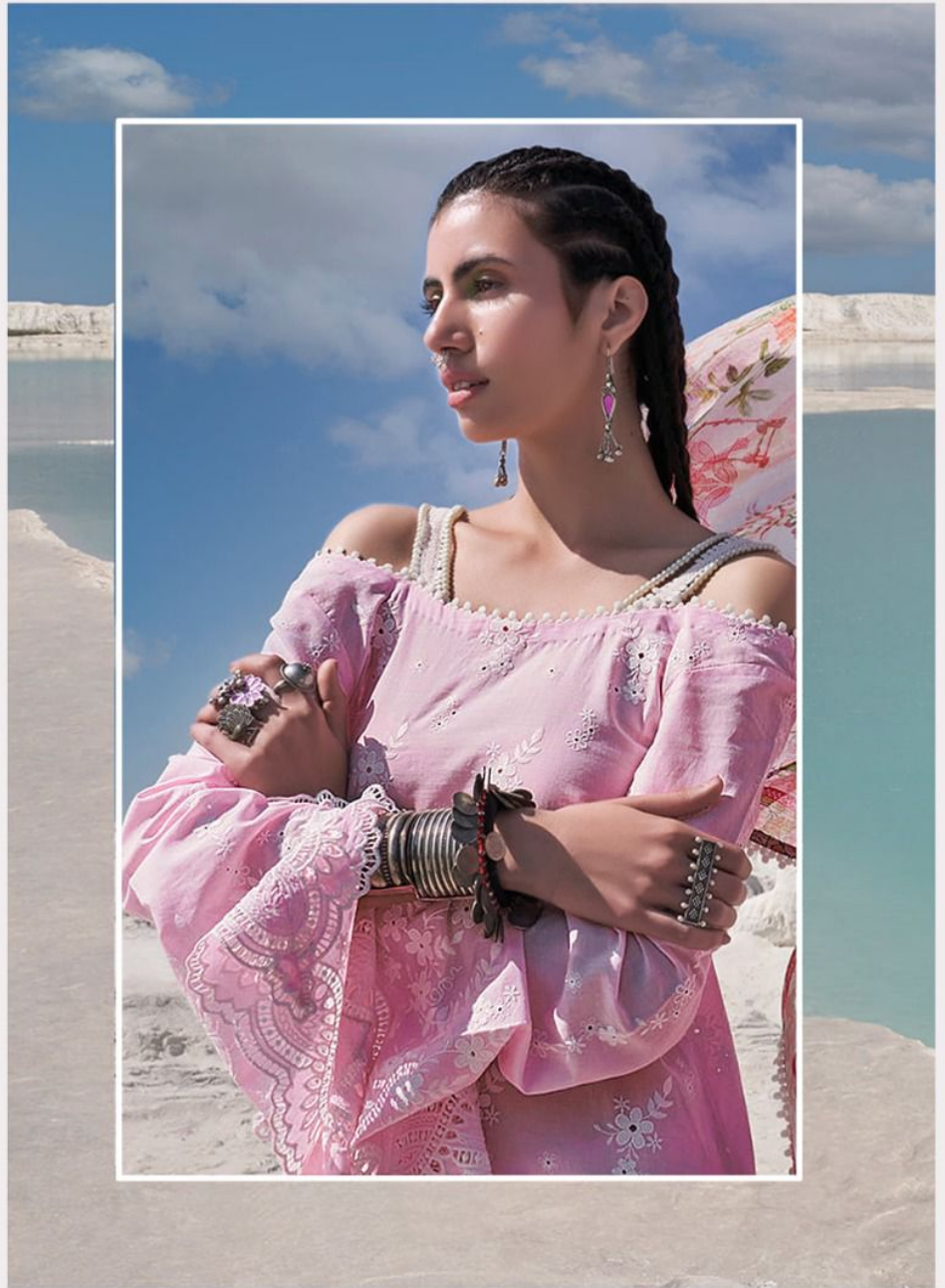


**Fepic®**

**Rosemeen®**

IMAGE CHIKANKARI  
COLLECTION

D.NO.46025







**Fepic**®

**Rosemeen**®

IMAGE CHIKANKARI  
COLLECTION



**Fepic®**



D.NO.46024



**Epic®**



**Rosemeen®**

IMAGE CHIKANKARI  
COLLECTION  
D.NO.46023



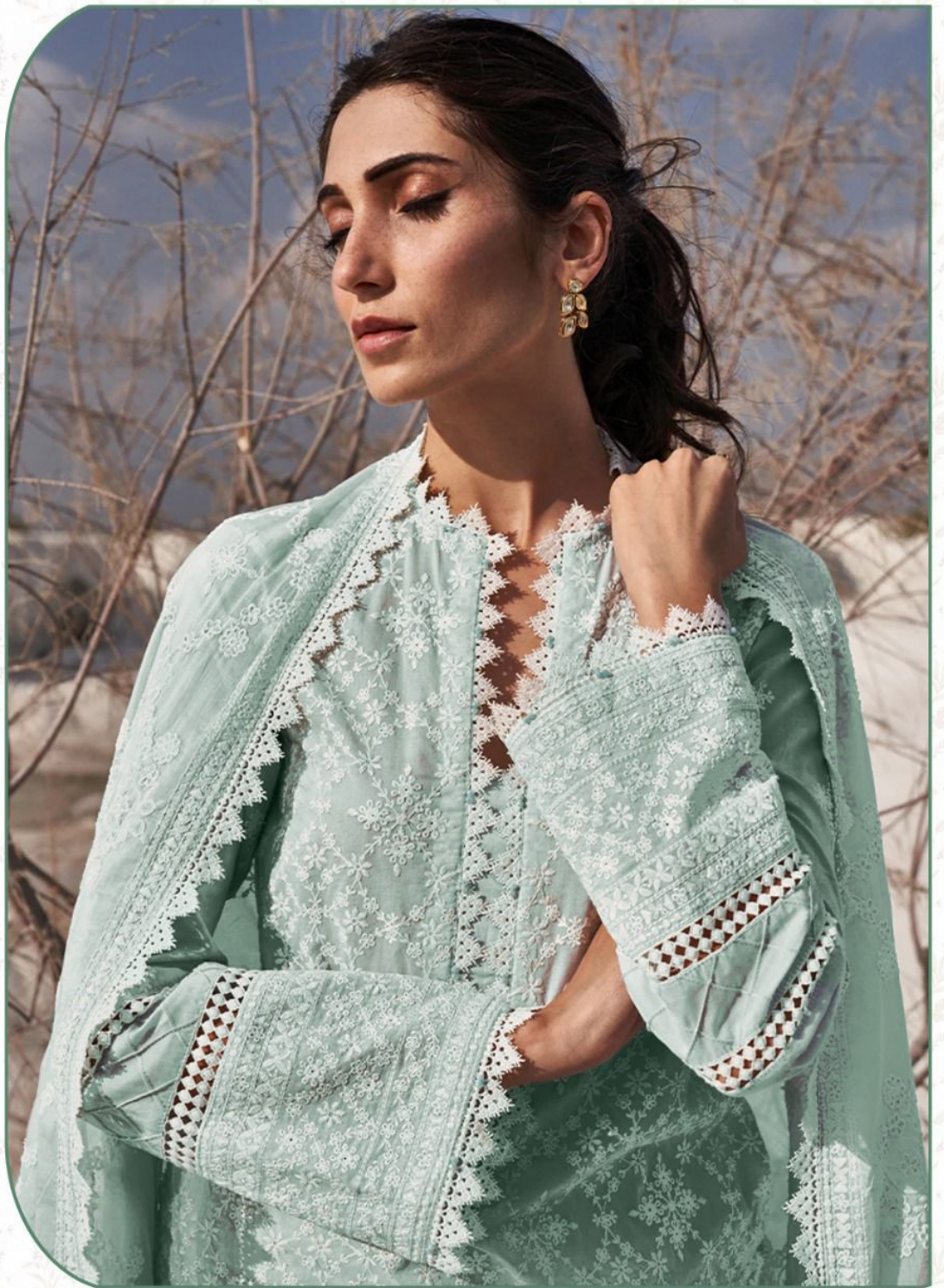


**Fepic®**

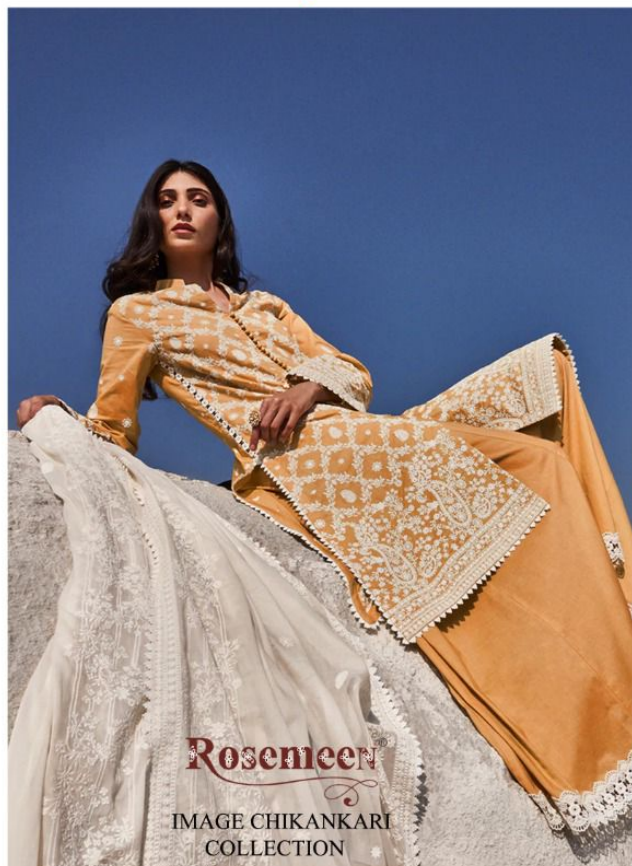
**Rosemeen®**

IMAGE CHIKANKARI  
COLLECTION

D.NO.46021



**Fepic®**



D.NO.46022







**Fepic<sup>®</sup>**  
**Rosemeen<sup>®</sup>**  
IMAGE CHIKANKARI  
COLLECTION  
D.NO.46027





**Fepic®**



**WASHING INSTRUCTIONS**

DO NOT USE ANY TYPE OF BLEACH OR STAIN REMOVING CHEMICALS  
BEFORE CUTTING / STITCHING, FABRIC SHOULD BE SOAKED IN WATER  
( ALL COMPONENTS SEPARATELY ) FOR 15 MINUTES  
DO NOT KEEP WET FABRIC IN TWISTED FORM IN ORDER TO AVOID COPY MARKS |  
WASH COLOURED AND WHITE FABRICS SEPARATELY  
IRON CLOTHES AT MODERATE TEMPERATURE | DO NOT DRY FABRIC IN DIRECT SUNLIGHT  
( EXTRA LACES, HANGINGS AND ACCESSORIES ARE NOT INCLUDED )

**Rosemeen®**

IMAGE CHIKANKARI  
COLLECTION

D.NO.46023





**Fepic®**



**WASHING INTRUCTIONS**

DO NOT USE ANY TYPE OF BLEACH OR STAIN REMOVING CHEMICALS  
BEFORE CUTTING / STITCHING, FABRIC SHOULD BE SOAKED BE SOAKED IN WATER  
( ALL COMPONENTS SEPARATELY ) FOR 15 MINUTES  
DO NOT KEEP WET FABRIC IN TWISTED FROM IN ORDER TO AVOID COPY MARKS |  
WASH COLOURED AND WHITE FABRICS SEPARATELY  
IRON CLOTHES AT MODERATE TEMPERATURE | DO NOT DRY FABRIC IN DIRECT SUNLIGHT  
( EXTRA LACES, HANGINGS AND ACCESSORIES ARE NOT INDUDED )

**Rosemeen®**

IMAGE CHIKANKARI  
COLLECTION

D.NO.46022







D.NO.46021



D.NO.46022



D.NO.46023



D.NO.46024



D.NO.46025



D.NO.46026




D.NO.46027

**Fepic®**

**Rosemeen®**  
IMAGE CHIKANKARI  
COLLECTION

 :\_Fepic

 :Fb.com/Fepic11



**Fepic®**



**WASHING INTRUCTIONS**

DO NOT USE ANY TYPE OF BLEACH OR STAIN REMOVING CHEMICALS  
BEFORE CUTTING / STITCHING, FABRIC SHOULD BE SOAKED BE SOAKED IN WATER  
( ALL COMPONENTS SEPARATELY ) FOR 15 MINUTES  
DO NOT KEEP WET FABRIC IN TWISTED FROM IN ORDER TO AVOID COPY MARKS |  
WASH COLOURED AND WHITE FABRICS SEPARATELY  
IRON CLOTHES AT MODERATE TEMPERATURE | DO NOT DRY FABRIC IN DIRECT SUNLIGHT  
( EXTRA LACES, HANGINGS AND ACCESSORIES ARE NOT INDDUED )

**Rosemeen®**  
IMAGE CHIKANKARI  
COLLECTION  
D.NO.46024

