



MOHMANTHAN™



Majestica

Unveiling the Inner
Majesty of Women.

Welcome to 'Majestica', where the essence of fashion is woven with threads of emotion and grace. In the realm of ethnic wear, women embody a unique majesty, a regal beauty that transcends time. Our catalog is a testament to this regality, a tribute to the elegant stories that every lady carries with her, etching her journey in the world of style.

Under the brand of Mohmanthan, this catalog, in every intricate design, every vibrant hue, we find the echoes of a woman's emotions, her cultural heritage, and her innate charm.

'Majestica' is a celebration of this inner majesty, a reflection of the strength, the grace, and the enduring beauty that defines her essence. Thus, 'Majestica' is not just a catalog; it's a journey into the majestic world of women's ethnic wear, where stories are spun, and beauty reigns supreme.





When Style Meets Impression:
A Beautiful Fusion.

Step into a world where style and impression fuse beauty harmoniously.



FASHIONS FACE, STYLE IS ETERNAL
23520

FABRIC: PURE CREPE GEORGETTE

DESIGN NO	SAREE FABRIC	BLOUSE FABRIC	Saree WORK	Blouse Work	Belt	CUSTZ.(SEMISTITCH/UN-STITCH)	BLOUSE SIZE
23508	Crepe satin silk	Satin Silk	Texture with Cord & Sequence Embroidered and Stone work	Cord & Sequence Embroidered and Stone work	Available	stitched Blouse	up to 38 Inch with margin of 42 inch
23512	Crepe Silk Georgette	Net	Texture with Cord, Sequence Embroidered & Stone work	Cord, Sequence Embroidered	Available	stitched Blouse	up to 38 Inch with margin of 42 inch
23519	Two Tone Georgette Silk	Malai Satin	Sequence Embroidered with Stone work	Sequence Embroidered with Stone work	NA	UN-stitched Blouse	0.80 mtr
23520	Pure Crepe Georgette	Banglari Silk	Cord & Sequence Embroidered with Stone work	Cord & Sequence Embroidered with Stone work	NA	UN-stitched Blouse	0.80 mtr



MOHMANTHAN™



Majestica

Unveiling the Inner
Majesty of Women.

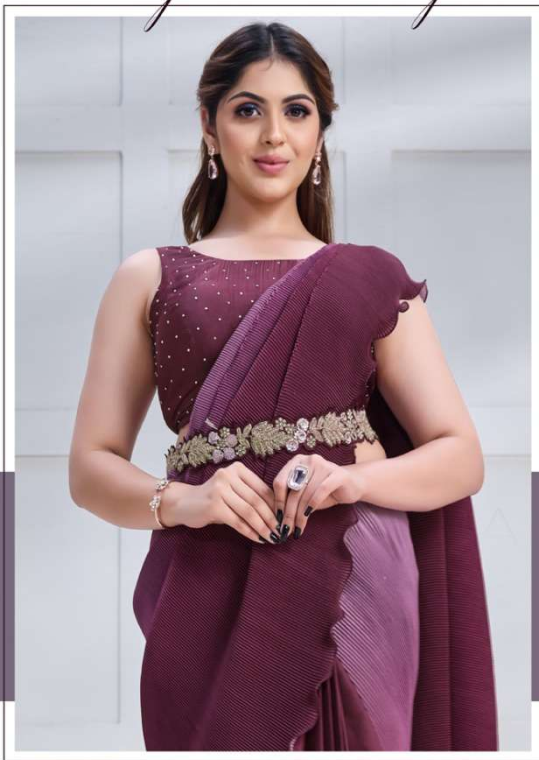
Welcome to 'Majestica', where the essence of fashion is woven with threads of emotion and grace. In the realm of ethnic wear, women embody a unique majesty, a regal beauty that transcends time. Our catalog is a testament to this regality, a tribute to the elegant stories that every lady carries with her, etching her journey in the world of style.

Under the brand of Mohmanthan, this catalog, in every intricate design, every vibrant hue, we find the echoes of a woman's emotions, her cultural heritage, and her innate charm.

'Majestica' is a celebration of this inner majesty, a reflection of the strength, the grace, and the enduring beauty that defines her essence. Thus, 'Majestica' is not just a catalog; it's a journey into the majestic world of women's ethnic wear, where stories are spun, and beauty reigns supreme.



GET WRAPPED IN
Majestic Beauty



THIS
WINE-COL-
ORED SAREE
WITH A HINT
OF LIGHT
PURPLE
EXUDES
GRACE AND
CHARISMA.

FASHIONS FADE, STYLE IS ETERNAL
23508

FABRIC: CREPE SATIN SILK



THE SERENE
AURA OF WINE
AND PURPLE
RADIATES A
COMMANDING
STYLE.

FASHION IS FADE, STYLE IS ETERNAL
23508

FABRIC: CREPE SATIN SILK



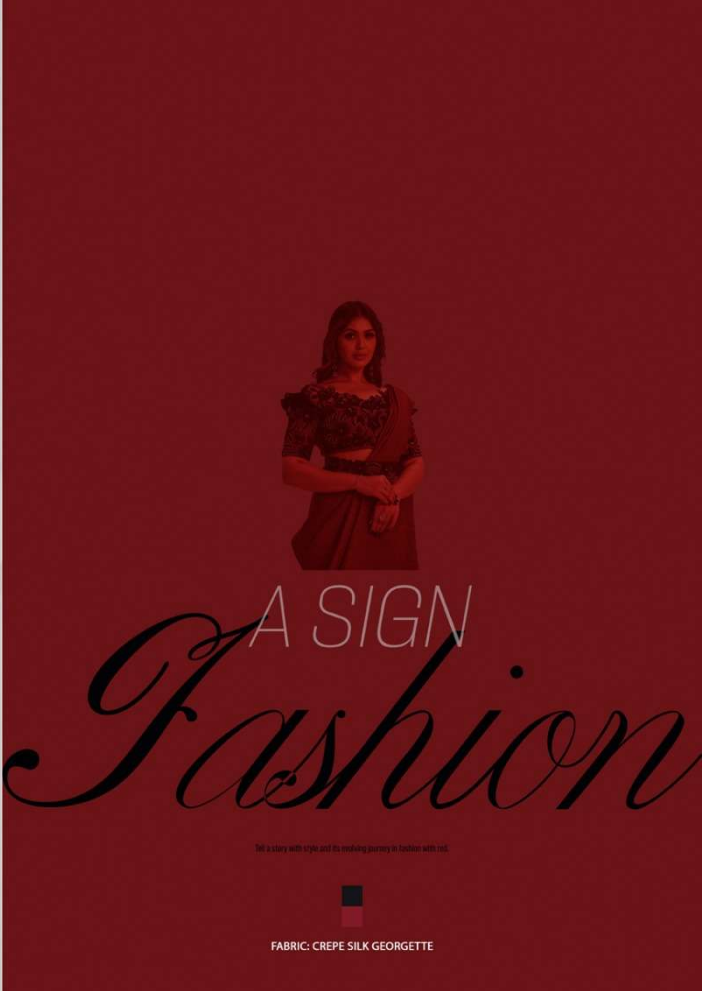
Discovering majestic
charm in the red

Join the timeless craftsmanship and style evolution with the red.



FASHIONS FADE, STYLE IS ETERNAL
23512

FABRIC: CREPE SILK GEORGETTE



*The fervent allure of
rich brown shades.*



Fabric and elegance fuse, leaving a lasting impression in your style.



FASHIONS MADE, STYLE IS ETERNAL
23519

FABRIC: TWO TONE GEORGETTE SILK



FABRIC: PURE CREPE GEORGETTE

In this saree, fusion of style and impression leaves a lasting mark.