

# ALEENA

VOL-1

आाawiyd



# ALEENA

VOL-1

आाawiyd





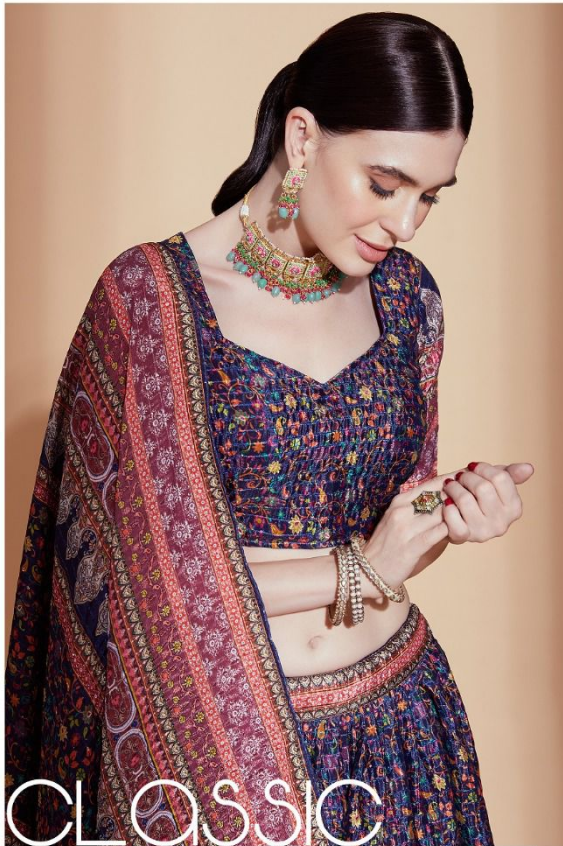
आaawiya®

CLASSIC  
NEVER GOES OUT OF STYLE

© 2011 AAWIYA. ALL RIGHTS RESERVED. AAWIYA IS A REGISTERED TRADEMARK OF AAWIYA. AAWIYA IS A REGISTERED TRADEMARK OF AAWIYA. AAWIYA IS A REGISTERED TRADEMARK OF AAWIYA.

2111





NEVER GOES OUT OF STYLE

2111





GO

FORTH & BE FABULOUS!

2112

Aaawiya®







Aaawiya®



BE

YOUR OWN LABEL

2113





Aaawiya®

Be

YOUR OWN LABEL

DESIGNED BY ANITA DOLY, CHENNAI. CLOTHING BY ANITA DOLY, CHENNAI. STYLING BY ANITA DOLY, CHENNAI. MAKEUP BY ANITA DOLY, CHENNAI. HAIR BY ANITA DOLY, CHENNAI. PHOTOGRAPHY BY ANITA DOLY, CHENNAI.

2113





आaawiya®

YOU

SHOULD ALWAYS  
FEEL PRETTY  
2114





आaawiya®



SHOULD ALWAYS FEEL PRETTY

2114





SMILES

ARE ALWAYS IN FASHION!

2115





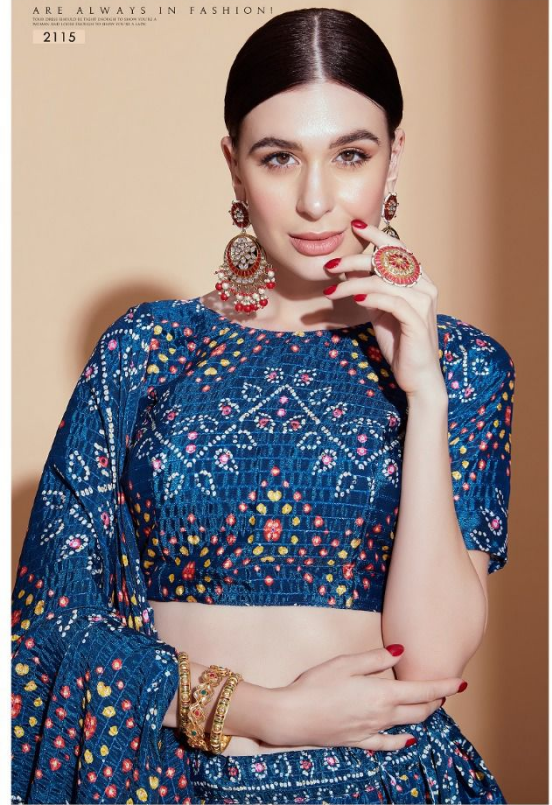
आaawiya®



SMILES

ARE ALWAYS IN FASHION!

2115



आaawiya®



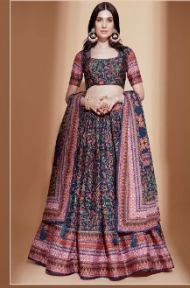
2111



2112



2113



2114



2115

ALEENA  
VOL-I

आaawiya®





WEIGHT - 1.5 KG

SKU	MAIN COLOR	LEHENGA FABRIC	BLOUSE FABRIC	DUPATTA FABRIC	DESCRIPTION
2111	PARPAL	CHINON CROCHET	CHINON CROCHET	CHINON CROCHET	DIGITAL PRINT & CORCHET WORK
2112	PEACH	CHINON CROCHET	CHINON CROCHET	CHINON CROCHET	DIGITAL PRINT & CORCHET WORK
2113	BLUE	CHINON CROCHET	CHINON CROCHET	CHINON CROCHET	DIGITAL PRINT & CORCHET WORK
2114	BLUE	CHINON CROCHET	CHINON CROCHET	CHINON CROCHET	DIGITAL PRINT & CORCHET WORK
2115	BLUE	CHINON CROCHET	CHINON CROCHET	CHINON CROCHET	DIGITAL PRINT & CORCHET WORK

- 1) LEHENGA & BLOUSE WORK:- DIGITAL PRINT & CORCHET
- 2) DUPATAA WORK:- DIGITAL PRINT & CORCHET WITH TASSELS
- 3) LEHENGA SEMI-STICH WITH ART SILK INNER & CAN-CAN WITH CANVAS
- 4) LEHENGA LENGTH 42" & WAIST 44"
- 5) LEHENGA FLAIR - 4 MTR & BLOUSE 1. MTR & DUPATTA LENGTH 2.3 MTR