

INAYA

BY STUDIO LIBAS



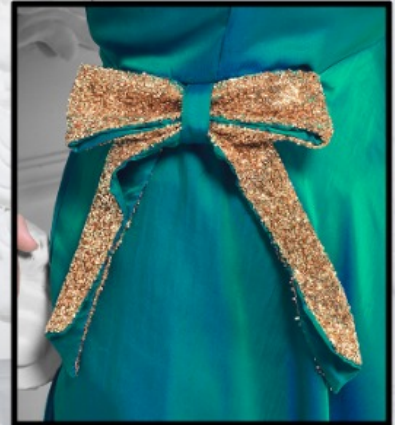


INAYA

BY STUDIO LIBAS

INAYA

BY STUDIO LIBAS





INAYA

BY STUDIO LIBAS

INAYA

BY STUDIO LIBAS



INAYA
BY STUDIO LIBAS





INAYA

BY STUDIO LIBAS

INAYA

BY STUDIO LIBAS





INAYA

BY STUDIO LIBAS

INAYA
BY STUDIO LIBAS





INAYA
BY STUDIO LIBAS

A woman with long dark hair is posing in a classical setting. She is wearing a vibrant green, off-the-shoulder, long-sleeved top with a wide, gold-embroidered belt tied in a bow at the waist. The top has a flared hem. She is also wearing dark blue, patterned trousers. Her accessories include a gold choker necklace, a large gold ring, and gold high-heeled sandals. She is standing next to a white classical column and a white ornate chair. The background features a white wall with intricate carvings.

INAYA

BY STUDIO LIBAS