











SPARKLE  
B

# B E W I T C H E S

EVOLVED FROM THE DEEP BLUE SEA, AQUA  
AND GREENS EMBELISHED WITH MOTIFS  
AND FLOWERS. A SEASON'S MUST HAVE.







SPARKLE  
A





A black and white photograph of a woman with long, dark, wavy hair. She is wearing a blue, long-sleeved dress with a bow detail on the sleeve. Her right hand is raised towards her face, and she is looking upwards with her eyes closed. The background is dark.

  
Prettify

**SPARKLE**

---







T R E N D Y   T R E D I T I O N A L



SPARKLE  
D





# GLAMOROUS

WHILE YOU WEAR AN ELECTRIFYING BLUE, THEY WILL TURN AN ENVOUS GREEN





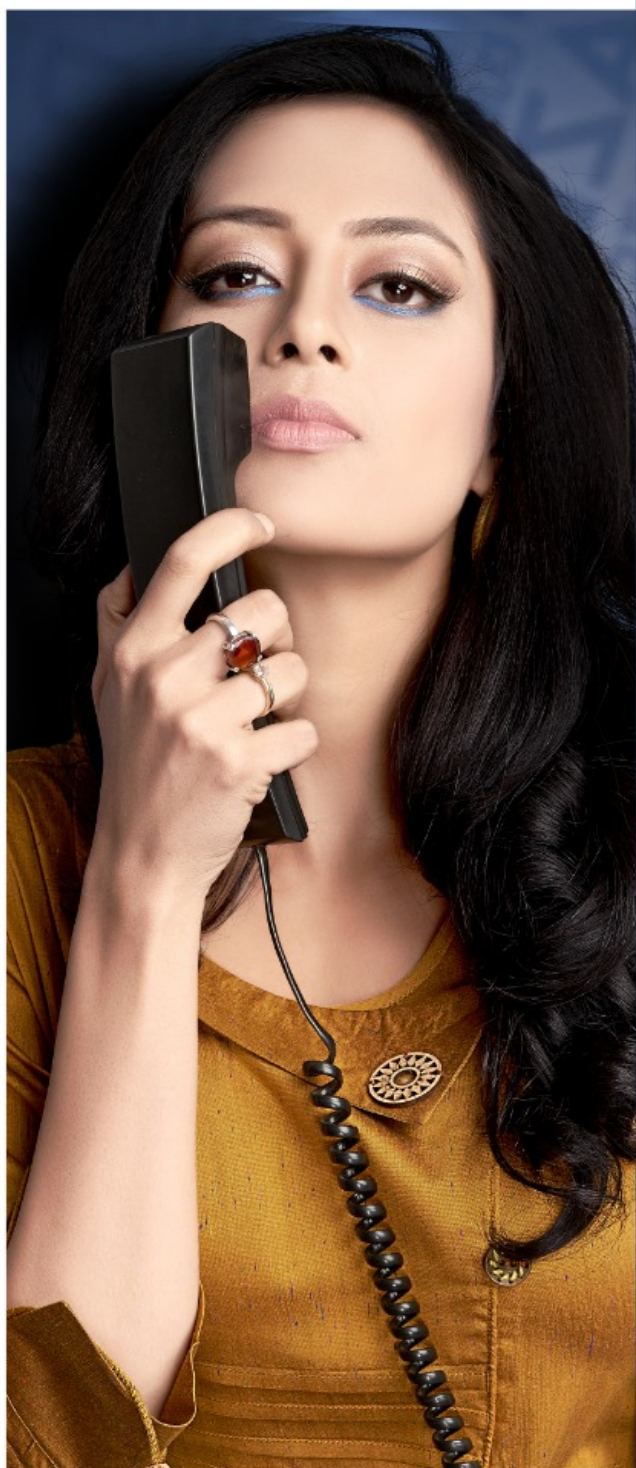






SPARKLE  
C





SPARKLE  
E







SPARKLE  
F

