



Shhkala

1206



Ubhkala

1203



卐 bhkala



1205



Abhkala



1204





Shhkala

1206





 bhkala



1201



1202



1203



1204

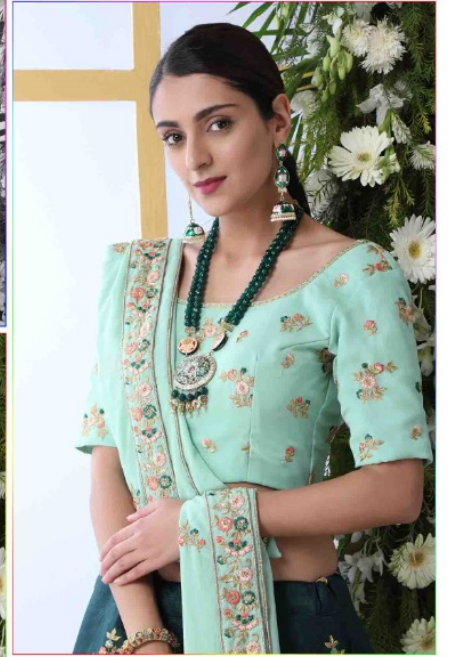


1205



1206

*Guldasta*  
Vol. 4



# Guldasta

Vol. 4

Design NO. (SKU)	Color	Lehenga Fabric	Choli Fabric	Dupatta Fabric	Size (Semi-Stitched)	Choli Work	Lehenga Work	Dupatta Work	Weight	Occasion
1201	Navy Blue	Art Silk	Art Silk	Net	UPTO 42 BUST & WAIST	Thread, Jari With Sequence Embroidered Work	Thread, Jari With Sequence Embroidered Work	Thread, Jari With Sequence Embroidered Work	2 KG	Wedding & Party Wear
1202	Yellow	Art Silk	Art Silk	Net	UPTO 42 BUST & WAIST	Thread, Jari With Sequence Embroidered Work	Thread, Jari With Sequence Embroidered Work	Thread, Jari With Sequence Embroidered Work	2 KG	Wedding & Party Wear
1203	Maroon	Art Silk	Art Silk	Net	UPTO 42 BUST & WAIST	Thread, Jari With Sequence Embroidered Work	Thread, Jari With Sequence Embroidered Work	Thread, Jari With Sequence Embroidered Work	2 KG	Wedding & Party Wear
1204	Mint Green	Art Silk	Art Silk	Net	UPTO 42 BUST & WAIST	Jari With Sequence Embroidered Work	Thread With Sequence Embroidered Work	Thread With Sequence Embroidered Work	2 KG	Wedding & Party Wear
1205	Off White	Art Silk	Art Silk	Net	UPTO 42 BUST & WAIST	Jari With Sequence Embroidered And Mirror Pasting Work	Thread, Jari With Sequence Embroidered And Mirror Pasting Work	Thread, Jari With Sequence Embroidered Work	2 KG	Wedding & Party Wear
1206	Dark Green	Art Silk	Georgette	Georgette	UPTO 42 BUST & WAIST	Thread, Jari With Sequence Embroidered Work	Thread, Jari With Sequence Embroidered Work	Thread, Jari With Sequence Embroidered Work	2 KG	Wedding & Party Wear



Ubbhkala



1202



Ubbhkala

1201